

COMPANY PROFILE

BROWN SAND CO.

General Contracting





"Our Vision for 2030: A Strong, Thriving, and Inclusive Saudi Arabia

Welcome to a vision of Saudi Arabia that stands as a beacon of strength, prosperity, and inclusivity—a nation that embraces opportunity for all. Grounded in the principles of Islam and guided by the path of moderation, we aspire to create a tolerant society that respects and honors those who choose to join us in this transformative journey towards success.

Our commitment is to forge enhanced partnerships with the private sector, empowered by three key pillars: our central role at the heart of the Arab and Islamic worlds, our robust investment capabilities, and our strategically advantageous geographical position. Through this approach, we aim to cultivate a conducive business environment, nurturing economic growth and vitality, leading to abundant employment prospects for our citizens and sustainable prosperity for all. This promise is deeply rooted in the spirit of cooperation and mutual responsibility.

Embraced and championed by His Royal Highness Prince Mohammed bin Salman bin Abdulaziz, the Crown Prince and Vice President of the Council of Ministers, Chairman of the Council of Economic and Development Affairs, this vision encapsulates our collective dedication to a future where every individual can thrive and contribute to the progress of our great nation."



Table of Content

- 01. Introduction
 - 02. Company Information
 - 03. Company Legal Licenses
 - a) Commercial Registration
 - b) Industrial Investment License (Arabic)
 - c) Zakat (Arabic)
 - d) Chamber of Commerce
 - e) Gosi
 - 04. Company Organization Chart
 - 05. Company List of Material Supplier
 - 06. Company List of Machineries and Equipment
 - 07. Client References and Major Completed Projects
 - 08. Reference Vendor Numbers (Aramco & SABIC)
 - 10. Office & Factory Location Map
 - 11. Specifications & Technical Data
 - a) LGS Frame Specifications
 - b) Wood Frame Specifications
 - 12. Standard Design & Drawings
 - 13. Material Certificate of Compliance
 - 14. Images
-

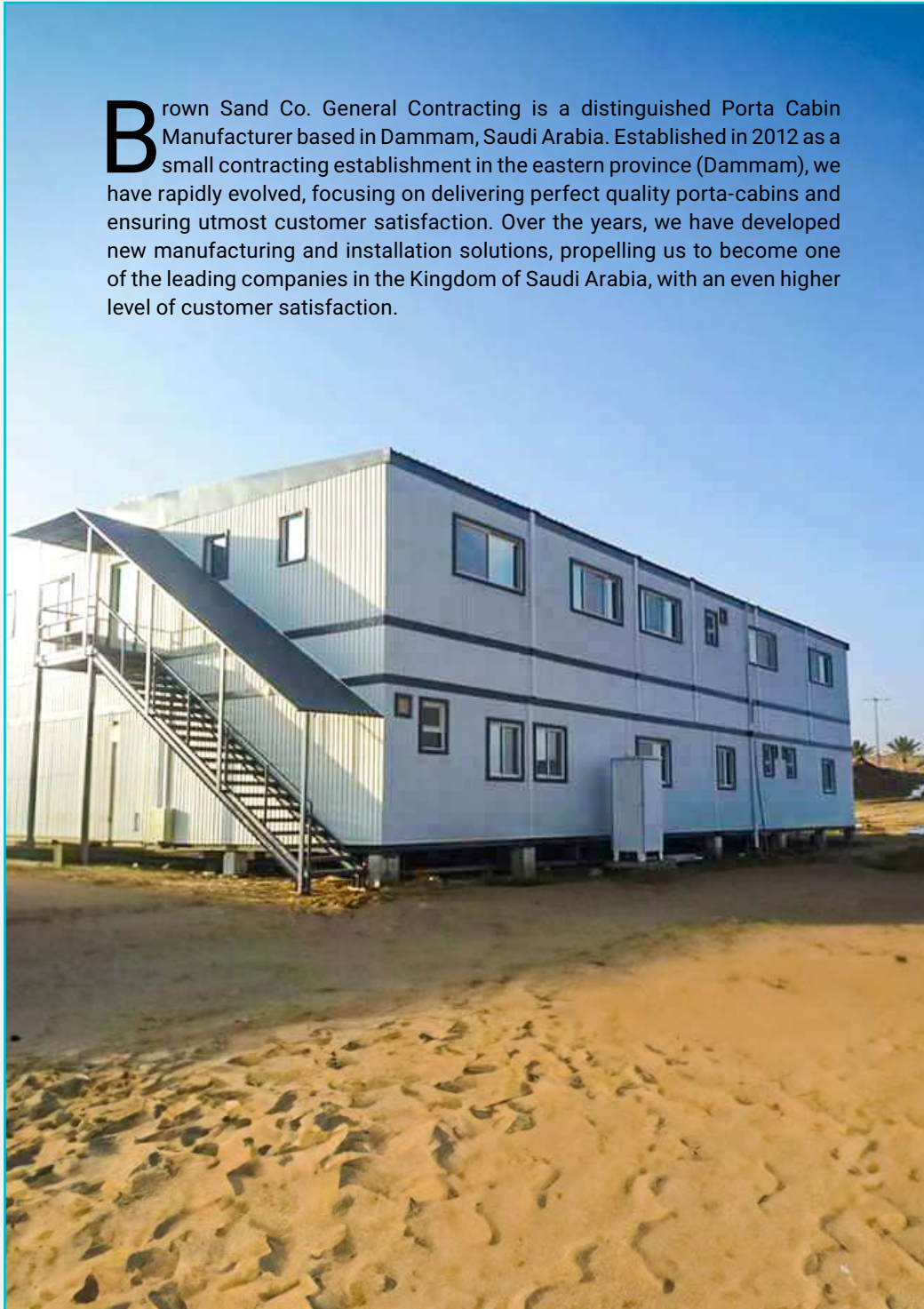


**Reaching your goals,
exceeding your expectations**



**Welcome to
Brown Sand Co.
General Contracting!**

Brown Sand Co. General Contracting is a distinguished Porta Cabin Manufacturer based in Dammam, Saudi Arabia. Established in 2012 as a small contracting establishment in the eastern province (Dammam), we have rapidly evolved, focusing on delivering perfect quality porta-cabins and ensuring utmost customer satisfaction. Over the years, we have developed new manufacturing and installation solutions, propelling us to become one of the leading companies in the Kingdom of Saudi Arabia, with an even higher level of customer satisfaction.





Our Expertise:

Our expertise lies in meticulously tailoring Porta Cabins to meet the unique requirements and specifications of our customers. We dedicate significant effort and time to crafting each cabin, ensuring extraordinary comfort, flexibility, and reliability. Precision engineering enables seamless installation at your desired location, fully customized to your specific needs.

Nationwide Presence:

Operating with a nationwide presence, Brown Sand Co. offers comprehensive Porta Cabin supply and installation services throughout Saudi Arabia. Our expansive reach ensures that our high-quality solutions are accessible to clients across the kingdom.

Uncompromising Quality and Safety:

At Brown Sand Portable Company, quality and safety are at the core of our manufacturing process. Through years of dedicated work, experience, and continuous improvement, we have developed our own construction methods to achieve optimum safety conditions and precise specifications for our porta-cabins.

Whether you require a security Porta cabin, a double-story Porta cabin, or specialized solutions such as Portable Schools, Shops, Log Cabins, Canteens, Bathrooms, Pantries, Mess Halls, Buildings, Hangars, Toilet Units, Hotels, Motels, Bunk Houses, or Security Offices, rest assured that we maintain the highest standards in every aspect of production.

Continuing our journey to reach new levels of excellence in this field, we are driven by our ambitions to continuously improve and better serve you. We are committed to providing exceptional Porta Cabin solutions and exceeding your expectations.



Mission:

"At Brown Sand Co. General Contracting, our mission is to manufacture and market safe, ready-made portable buildings, surpassing market expectations to make a positive impact on society and the environment. We are dedicated to developing solutions that contribute to the advancement of our communities and surroundings."

Vision:

"Our vision at Brown Sand Co. General Contracting is to stand as a prominent figure in housing and camp-designing solutions and related services, both in the Middle East and on the international stage. We strive to redefine industry standards, consistently delivering excellence in the field."



VALUES

Credibility, Mutual Respect, Reliability, and Integrity: We uphold the highest standards of credibility, mutual respect, reliability, and integrity in all our interactions and endeavors.

Customer Loyalty: Our commitment is to foster lasting relationships with our customers, built on trust, transparency, and exceptional service.

Innovation and Continuous Improvement: We embrace innovation and a culture of continuous improvement, seeking better solutions and methods to meet evolving needs and expectations.

Friendly Environment: We value and nurture a friendly, inclusive, and collaborative work environment where every team member's contributions are acknowledged and appreciated.

Human Capital as Our Greatest Asset: We recognize our employees as our most valuable asset, investing in their growth, well-being, and professional development.

Uncompromised Quality: Quality is the cornerstone of our operations, and we stand unwavering in maintaining the highest quality standards in every aspect of our work.



OUR SERVICES IN BRIEF



Furniture Solutions

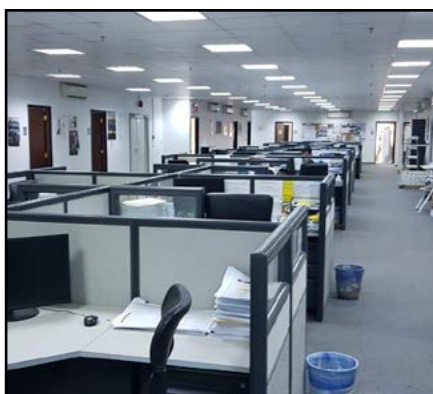
Furnishing Excellence

Customized residential and office furniture design and installation, catering to specific preferences and facility needs.

Fire Alarm & Fire Fighting Systems:

Guardians of Safety

Expertise in providing and installing fire alarm and firefighting systems, ensuring safety and compliance within Porta cabins.



Communication Infrastructure:

Networked Connectivity

Networking, telecommunications, and camera systems installation within Porta cabins, optimizing communication infrastructure and ensuring seamless connectivity.

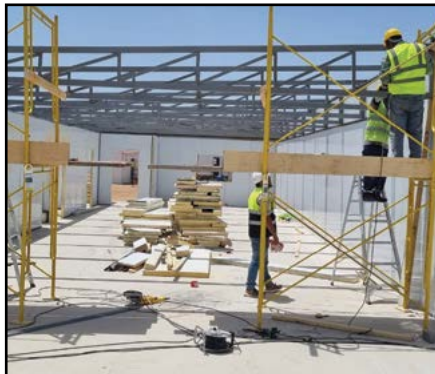


Air Conditioning Units: Cool Comfort Everywhere

Installation and maintenance of various air conditioning units, including wall-mounted, window, cassette, and package units, ensuring optimal cooling solutions.

Transportation Services: On the Move with Precision

Efficient transportation services for manufactured units, including loading, unloading, and relocation, facilitated by comprehensive logistics support.



Renovation and Maintenance: Preserving Structures, Enhancing Spaces

Comprehensive maintenance, repairs, refurbishments, and reassembly services to enhance or upgrade buildings, extending their lifespan and functionality.

Water and Sewage Solutions: Water and Waste Solutions

Supply and installation of water and sewage tanks, as well as drainage tank services, ensuring efficient water management and waste disposal at sites.



PRE -FAB BUILDING STANDARD AND SPECIFICATION

FOOTING:

- A number of concrete blocks supplied of size (300*300*400mm) for base laying ,(default) Or, (300mm) steel legs fixed as per the customer's request.

STAIRCASES:

- Steel staircases with handrails to be provided for each external door as per drawings and specs

RAMPS:

- Steel ramps with handrails to be provided for each external door as per drawings and specs

SKIRTING:

- Steel ramps with handrails to be provided for each external door as per drawings and specs

BASE FRAME:

- (120*64 mm) (I) section beam ASTM A36 main runner / base frame.
- (120*64 mm) (I) section beam ASTM A36 cross members.
- Each member is welded at the joints according to structural welding practice. All beams are cleaned, primed, and painted for weather protection. (grey color - default)
Two (2) lifting points are fixed at each side for crane lifting.

FLOOR FRAME

- (89x41x0.70mm-C) spaced @609mm O.C fixed with the steel base frame.

FLOOR DECKING & FINISHING

- (18mm) thick water proof and fire rated cement boards glued and screwed to the steel joists for floor decking & Finishing. (3 mm) thick vinyl rolls for rooms floor finishing.
- (3 mm) thick heavy-duty vinyl rolls for toilets floor finishing.

EXTERNAL WALLS

- (89x41x0.75mm-C) Light Gauge Steel (LGS) fixed

- top and bottom runner with 1row horizontal frame noggins in the center joists for internal wall structure.
- (100mm) thick fiberglass insulation with aluminum vapor barrier.
- 0.32mm p refinshed corrugated sheet exterior sheeting color white.

INTERNAL WALLS

- (89x41x0.75mm-C) Light Gauge Steel (LGS) fixed top and bottom runner with 1row horizontal fram noggins in the center joists for internal wall structure.
- (100mm) thick fiberglass insulation with aluminum vapor barrier.
- (12mm) thick gypsum board with finishing paints

ROOF & INTERNAL CEILING

- Interior height is (2,400mm) from finished floor up to the ceiling.
- (89x41x0.80mm-C)LGS (1200 mm) spacing trusses for support framing the roofs.
- (12.5mm) Fire rated gypsum blaster board to be screwed to the steel joists for the ceiling
- (100 mm) thick fiberglass insulation with aluminum vapor barrier. (0.32mm) standard corrugated (gauge 24) painted sheets frost white Colored for outside covering.

A/C

- Split type A/C base frame with electrical provision switch only.

EXTERNAL DOORS

- High quality, thick, and weatherproof (Steel - or aluminum) doors with round locks key & Push bar.
- Single leaf door of size (1000*2000 mm) with handle locks and keys.
- Double leaf door of size (1800*2000 mm) with handle locks and keys

INTERNAL DOORS

- For rooms: hollow core wooden doors of size (900*2100 mm) with round locks and keys.
- For kitchens: PVC doors of size (700*2100 mm) with round locks and keys.
- For toilets: PVC/Aluminum cubical internal doors of size (700*2100 mm) with round locks and keys

WINDOWS

- (1000x1000 mm) white powder coated frame aluminum single glass sliding window, dust proof, with horizontal clear (6 mm) tinted glass and a removable fly screen.

SAFETY SPECIFICATIONS

- Battery type smoke detector.
- Fire extinguishers for each building at each exit door.
- Emergency light to be fixed above each exit door.
- Exit light to be fixed above each external door.

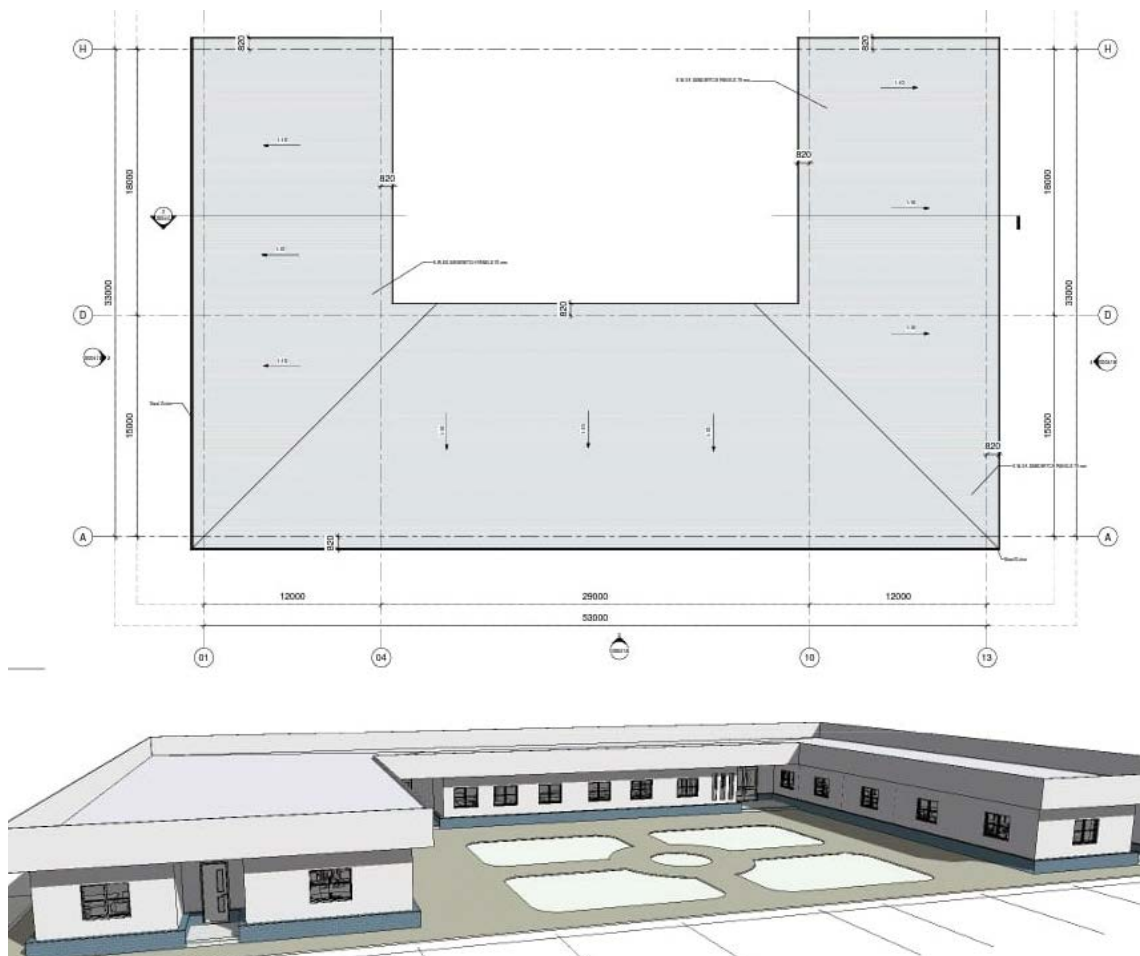
ELECTRICAL SPECIFICATIONS

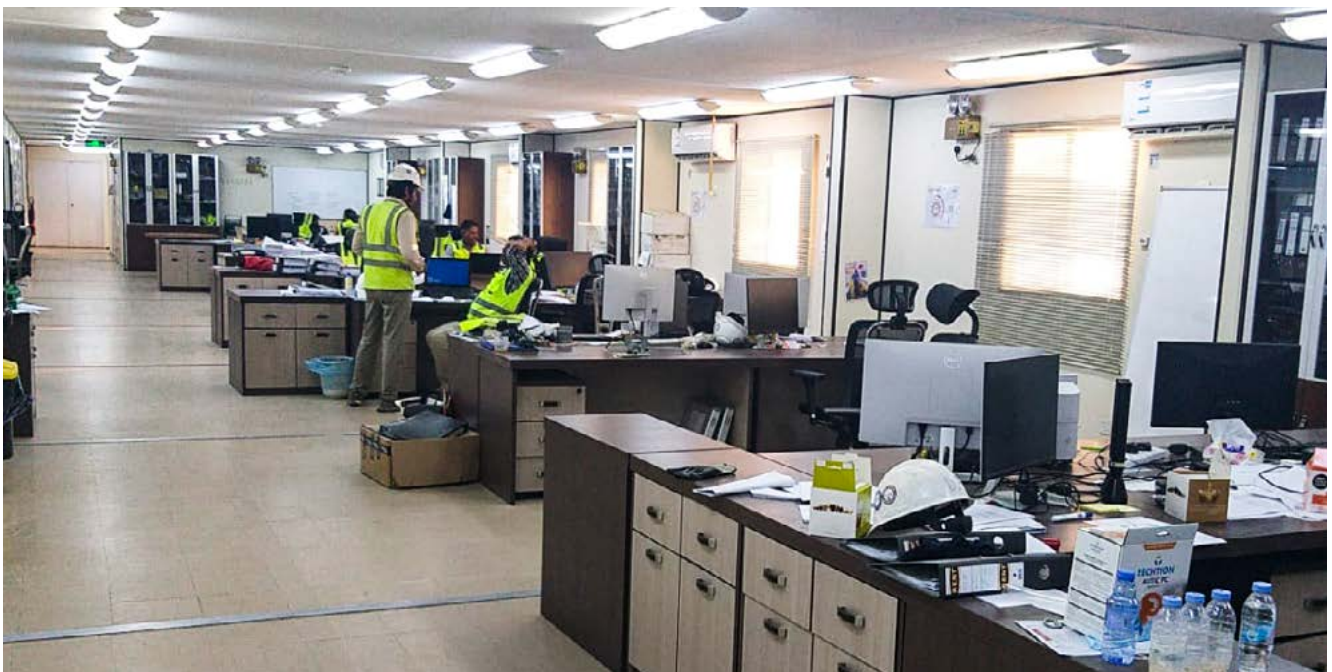
- All the electrical connections will be as per Saudi Arabia code.
- The electrical service voltage will be as your request (380/220 v).
- Flexible metal hoses, and metal conduits concealed within walls and Ceiling to install the wiring system. Non-metallic sheet copper wires of sizes (4 mm)

- and(6 mm) for Different types of loads. Riyadh Wire Complete 3 phase distribution panel board with main circuit breaker and sufficient branch circuit breakers. Different types of receptacles (220V, switches) (Legrand) (50W) (250x250mm) exhaust fans for toilet and kitchens. Fine ready-wiring grid for all types of air conditioners and water Heaters.
- Interior light fixture (2x40watt) with a plastic cover. Distributed panel.
- Exterior weather proof lighting fixtures mounted above each external door.

PLUMBING SPECIFICATIONS

- Plumbing installations as per SA local code.
- Hot water supply piping system (CPVC - schedule 80) concealed to wet areas wall structure.
- Cold water supply piping system (PVC - schedule 80) concealed to. Wet areas wall structure.
- S.s kitchen Sink, and an aluminum cabin under for the kitchen area.
- Ceramic hand washes with pedestal, shelf and mirror. 50ltr minimum water heater 220v or as specified. Shower tray 80x80mm fixing with complete accessories.













تاريخ الإصدار: 2022/12/07
الرقم المميز: 3107794205



الهيئة العامة للزكاة والدخل
General Authority of Zakat & Tax



شهادة تسجيل في ضريبة القيمة المضافة VAT Registration Certificate

تشهد الهيئة العامة للزكاة والدخل بأن المكلف أدناه مسجل في ضريبة القيمة المضافة
بتاريخ 2022/12/07

Hereby, The General Authority of Zakat & Tax (GAZT) certifies that the taxpayer below is
VAT registered on 07/12/2022

اسم المكلف:	مؤسسة الرمال السمرات للمقاولات العامة	Taxpayer Name:
رقم التسجيل الضريبي:	310779420500003	VAT Registration Number:
تاريخ نفاذ التسجيل:	2023/01/01	Effective Registration Date:
عنوان المكلف:	الخبز، الخبر، يتبع، 34623	Taxpayer Address:



كمكلف مسجل في ضريبة القيمة المضافة، لا يجوز لك تحصيل ضريبة القيمة المضافة من عملائك قبل تاريخ
نفاذ التسجيل بالضريبة. في حال تبين غير ذلك، ستقوم الهيئة العامة للزكاة والدخل بتنفيذ الغرامات المستحقة

هذه الوثيقة مرسلة من النظام الآلي ولا تحتاج إلى توقيع
- الهيئة العامة للزكاة والدخل -

Proof Number	1032424514	رقم الإثبات
Original Date	26/3/2023	تاريخ الإصدار
Expiration Date	9/22/2023	تاريخ الانتهاء



إثبات عنوان Address Proof

Address Holder Details

بيانات صاحب العنوان

Name	مؤسسة الرمال الحمراء للمقاولات العامة										الاسم	
Customer Acc.	3	1	3	2	6	4	7	8	4	0	2	رقم الحساب
Reg. Date	26/3/2023										تاريخ التسجيل	

Address Details

تفاصيل العنوان

Short Address	E	P	J	A	8	8	0	4	العنوان المختصر						
Building No.									الشارع	رقم المبنى					
	8	8	0	4						8	8	0	4		
Secondary No.									الحي	الرقم الفرعي					
	3	9	7	3						3	9	7	3		
Postal Code									الرمز البريدي						
	3	2	9	4	1						3	2	9	4	1
City									المدينة						
ABU MA'AN								ابو معن							
Kingdom of Saudi Arabia								المملكة العربية السعودية							



للتحقق To Verify

<https://proof.address.gov.sa/VerifyProofNA.aspx>

تم إصدار هذا الإثبات إلكترونياً ولا يتطلب التوقيع عليه

تم إصدار هذا الإثبات بناءً على طلب الموضح أعلاه، ويحظر قطعياً تقليده أو إدخال أي تعديلات عليه سواء بالإضافة أو الحذف، وبعد الإثبات لغياً إذا شابه شيء من ذلك، كما يعرض صاحبه للمساءلة القانونية.

This proof has been issued electronically and does not require a signature

This proof has been issued upon the request of the above-named, and it is absolutely prohibited to imitate it or make any modifications to it, whether by addition or deletion, and the proof is considered void if it is marred by something, and its owner is subject to legal accountability.



مؤسسة الرمال السمراء للمقاولات العامة



السجل التجاري: 2060622875

رمزك التجاري QR Code

من خلاله يمكنك التحقق المباشر من المعلومات:

- السجل التجاري
- رخصة البلدية
- شهادة السعودة
- برنامج نطاقات
- شهادة الزكاة
- الغرفة التجارية

الرقم الموحد: ٧٠٠٩١٦٢٧٢٣
رقم المنشأة: ٢٠٦٠٦٢٢٨٧٥
التاريخ: ١٤٤٢/٠٤/٠٢ هـ

شهادة تسجيل مؤسسة فردية Individual Establishment Registration Certificate

وزارة التجارة
Ministry of Commerce



الاسم التجاري للمؤسسة:	مؤسسة الرمال السمراء للمقاولات العامة
مركزها الرئيسي:	٨٥٤٩، بنبع، الثقبة، ٣٣٤٧
هاتف:	٠١٣٨٩٤٣٧٠٦
الرمز البريدي:	٣٤٦٢٣
ص. ب:	
إسم التاجر:	مؤني قصيص عبيد الهاجري
الجنسية:	سعودي
تاريخ الميلاد:	١٤٠٧ هـ
رقم السجل المدني - الإقامة:	١٠٧٥٩٦٤٧٥٧
تاريخه:	١٤٤٠/٠٥/٠٩ هـ
مصدره:	
رقم الحفيظة - الجواز:	
تاريخه:	
مصدره:	
للإطلاع على بيانات الأنشطة الرجاء مسح الرمز التجاري	
رأس المال:	٥,٠٠٠
خمس ألف ريال فقط لا غير	
إسم المدير أو الوكيل المفوض:	مؤني قصيص عبيد الهاجري
الجنسية:	سعودي
تاريخ الميلاد:	١٤٠٧ هـ
رقم السجل المدني - الإقامة:	١٠٧٥٩٦٤٧٥٧
تاريخه:	١٤٤٠/٠٥/٠٩ هـ
مصدره:	
سلطات المدير:	
يشهد مكتب السجل التجاري بمدينة:	الثقبة
بأنه تم تسجيل المؤسسة المذكورة أعلاه بمدينة:	الثقبة
وتنتهي صلاحية الشهادات في:	١٤٤٦/٠٤/١٤ هـ
بموجب الإيصال رقم:	٢٣١٠٣١٠٢٥١٠٣
وتاريخ:	١٤٤٥/٠٣/٢٦ هـ



السادة / مؤسسة الرمال السمراء للمقاولات العامة

نسأل الله أن يكتب لكم التوفيق والنجاح في عملكم التجاري وأن تكونوا شريكاً في تعزيز اقتصاد المملكة العربية السعودية.

يسرنا إبلاغكم بأن رقم منشأتكم الموحد هو

٧٠٠٩١٦٣٧٣٣

وقد تم ربطه بالخدمات الحكومية التالية..

٦٠٢٥٨١٧٥٦

رقم منشأتكم



المؤسسة العامة للتأمينات الاجتماعية
General Organization for Social Insurance

٣٠٦٠٦٣٣٨٧٥

رقم منشأتكم



وزارة التجارة
Ministry of Commerce

٣٠٣٧٣٠

رقم منشأتكم



اتحاد الغرف السعودية
Federation of Saudi Chambers

٧-١٩٤٤٥٧٠

رقم منشأتكم



الموارد البشرية
والشؤون الاجتماعية

٤٢٠٤٤٦٦٣٦٩١

رقم منشأتكم



بلدي
balady

٣١٠١٥٤٩٩٤٧٦

رقم منشأتكم



سبيل
SPI

٣١٠٧٧٩٤٢٠٥

رقم منشأتكم



هيئة الزكاة والضريبة والجمارك
Zakat, Tax and Customs Authority

للاستفادة من الخدمات المقدمة
من الجهات الحكومية



دليل التاجر



OUR CLIENTS

SAUDI ARAMCO

SABIC

**SAUDI ELECTRIC COMPANY
(S.E.C.)**

**ROYAL COMMISSION (JUBAIL &
YANBU)**

**SAUDI GROUND SERVICES
COMPANY (S.G.S.)**

BIN LADEN GROUP

**KING FAHAD BRIDGE CUSTOMS
AUTHORITY**

ALYAMAMA GROUP

SAMSUNG

HAUNDAI

MA'ADEN

**ZAMIL INSPECTION AND
MAINTENANCE OF INDUSTRIAL
PROJECTS CO. (ZIM1PCO)**

ABDUL ALIAL-AJMI CO.

**BEIJING CONSTRUCTION &
ENGINEERING GROUP CO.
(B.C.E.G.)**

BR. CAT. INTERNATIONAL CO. LTD.

ANABEEB CO.

KHODARI CO.

**ABDULLAH AHMED
AL-DOSSARY HOLDING CO.**

SENDAN INTERNATIONAL CO.

S 8, K ENGINEERING

R.T.C.C.

AZMEELCO.

AL RASHED CO.

CAYAN

S.S.E.M.

AL-QAHTANI FISK

PETROJET - K.S.A.

**BASEL ABU AL-RUB & PARTNER
CO. LTD.**

PAN GULF PIPING SYSTEMS CO.

PROJECT BUILD CO. (B.P.C.)

**ABSAL JOHN PAUL
CONTRACTING CO.**

LIMOUSINACONTRACTING CO.

AL-REHAN AL-ARABIA CORP.

AIC STEEL

BRIGHT SAUDI

PETROJET

CHINA HARBOU



C.R #2060622875
PO Box :32247 Dammam Abu Hedriyah road.
Tel: 013-0567311325
Email: brownsandb@gmail.com,

